



## Alexandria Public Schools COVID-19 Dashboard



<b>710</b> Total Staff	<b>4,186</b> Total Students
<b>116</b> Total Confirmed Staff Cases	<b>568</b> Total Confirmed Student Cases
<b>9</b> Total Active Staff Cases	<b>68</b> Total Active Student Cases
<b>0.04%</b> Percent Staff with Active Cases	<b>1.62%</b> Percent Students with Active Cases

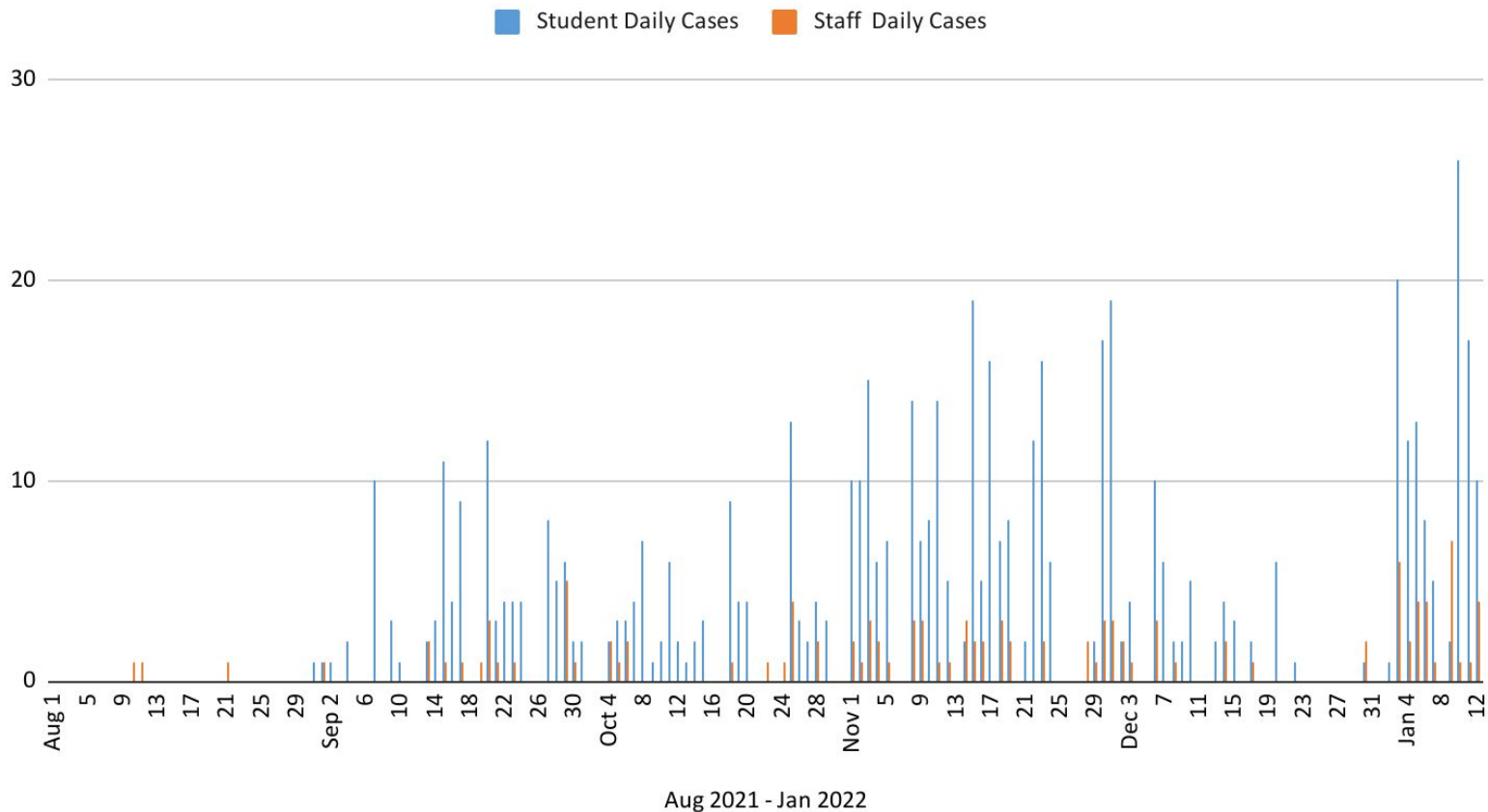
Total student count reflects PreK-12 enrollment as of October 1, 2021

COVID-19 vaccine opportunities have been offered to all staff members

*This dashboard is updated weekly and represents a snapshot of data through  
January 12, 2022*

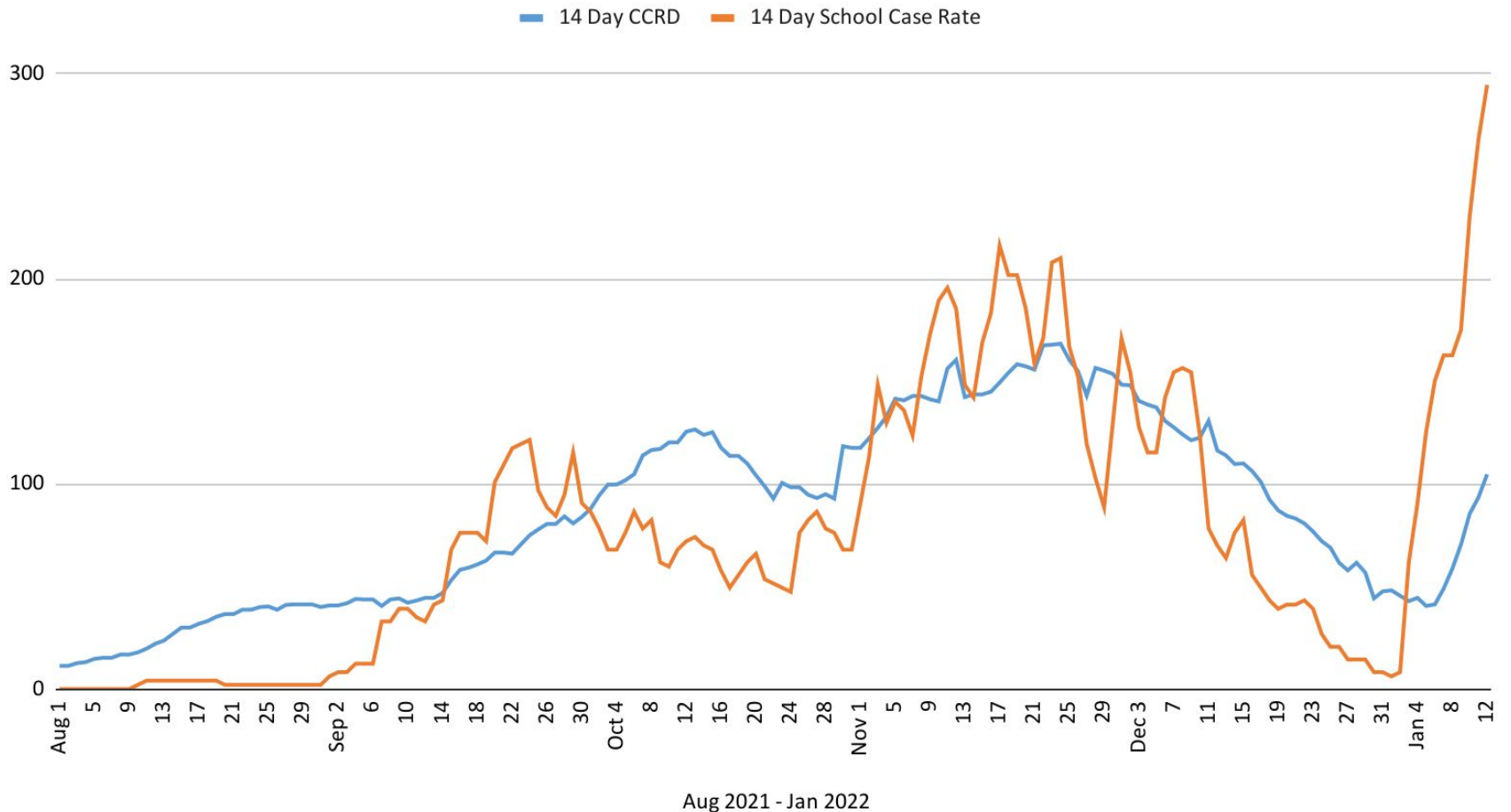
# Student and staff positive cases by date Aug 2021 to Jan 2022

Student Daily Cases and Staff Daily Cases



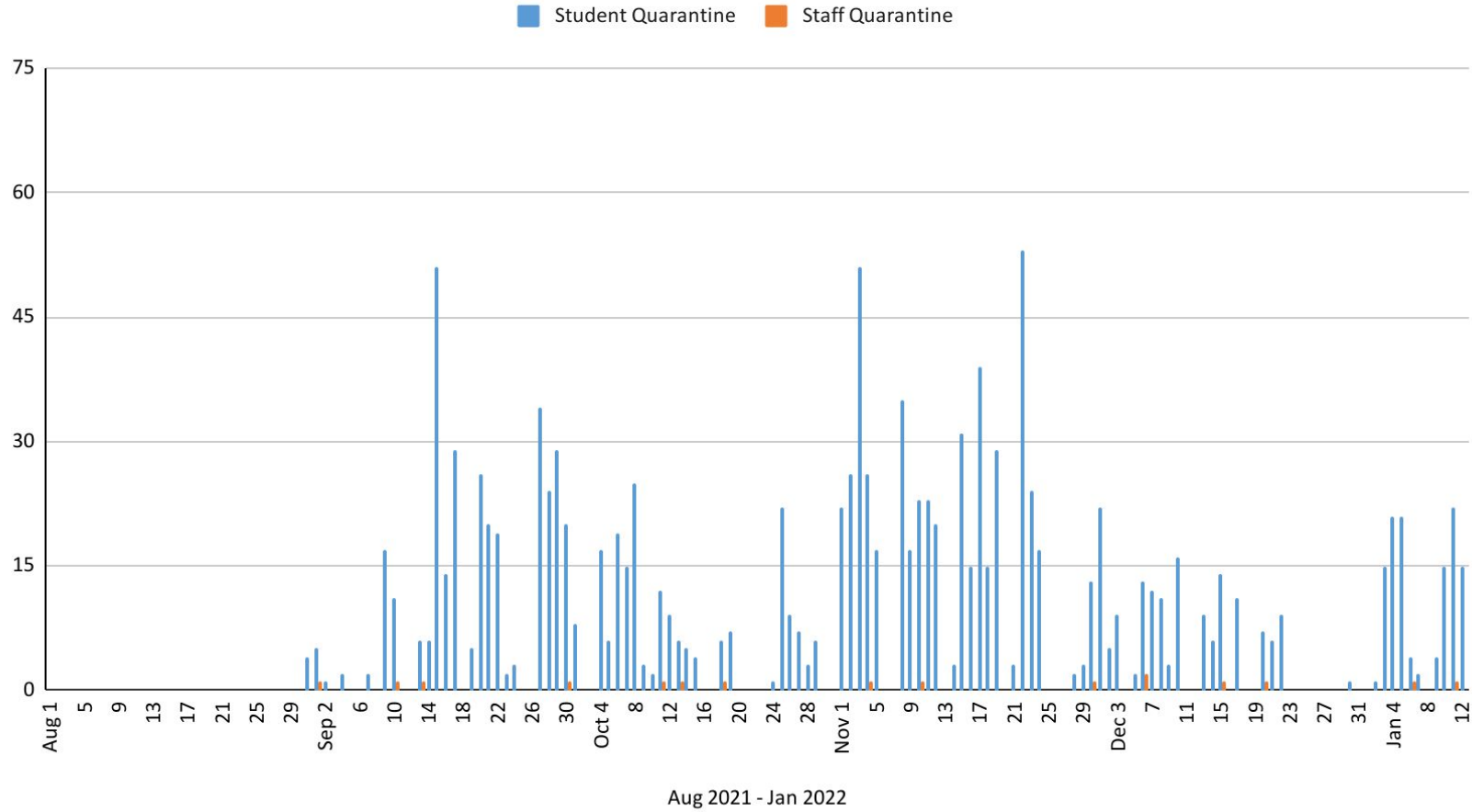
# County Case Rate Data and APS Data Aug 2021 to Jan 2022

14 Day CCRD and 14 Day School Case Rate



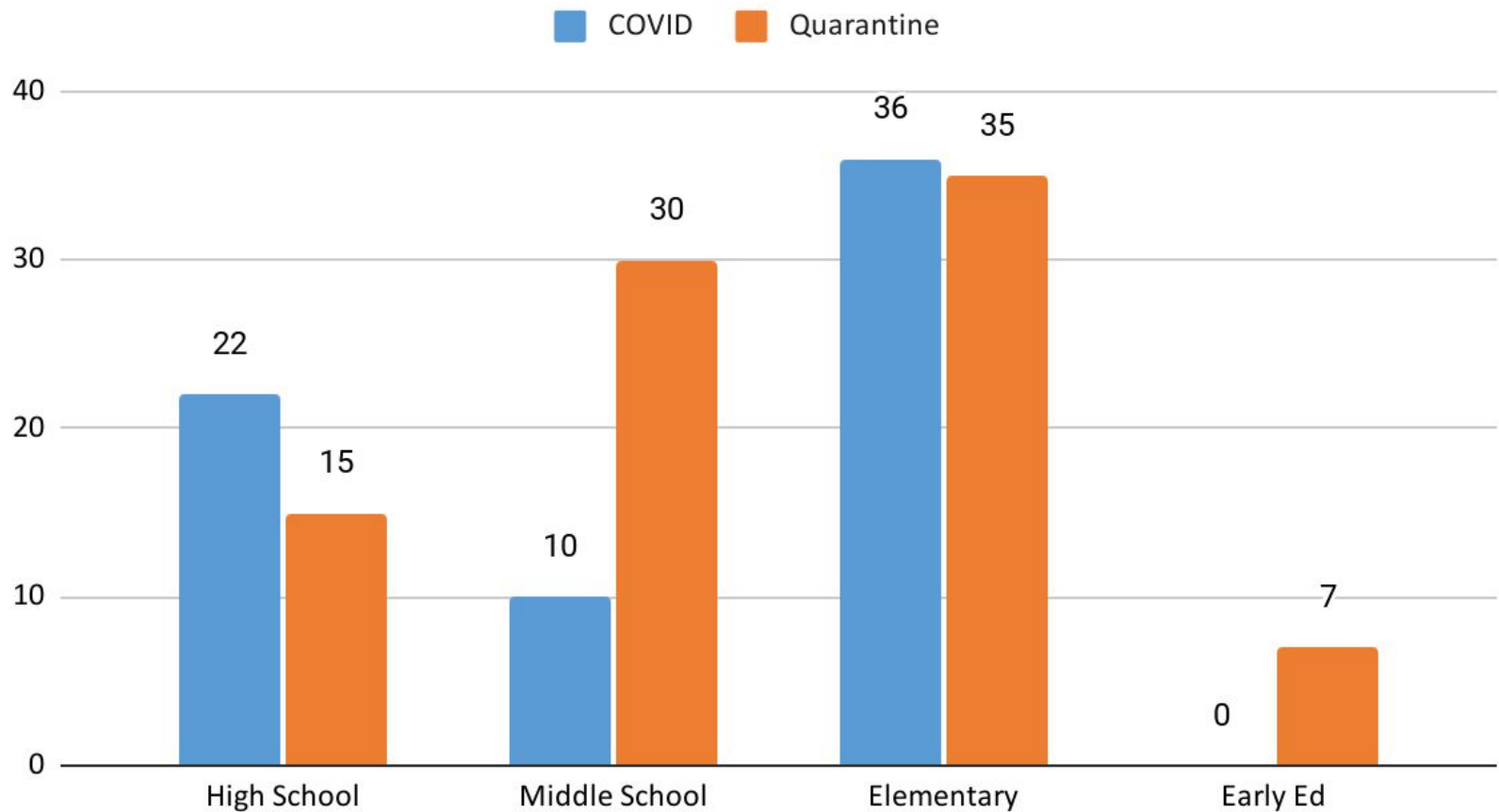
# Students/staff by date placed in quarantine via close contact with a positive case

Student Quarantine and Staff Quarantine Aug 2021 to Jan 2022 by date



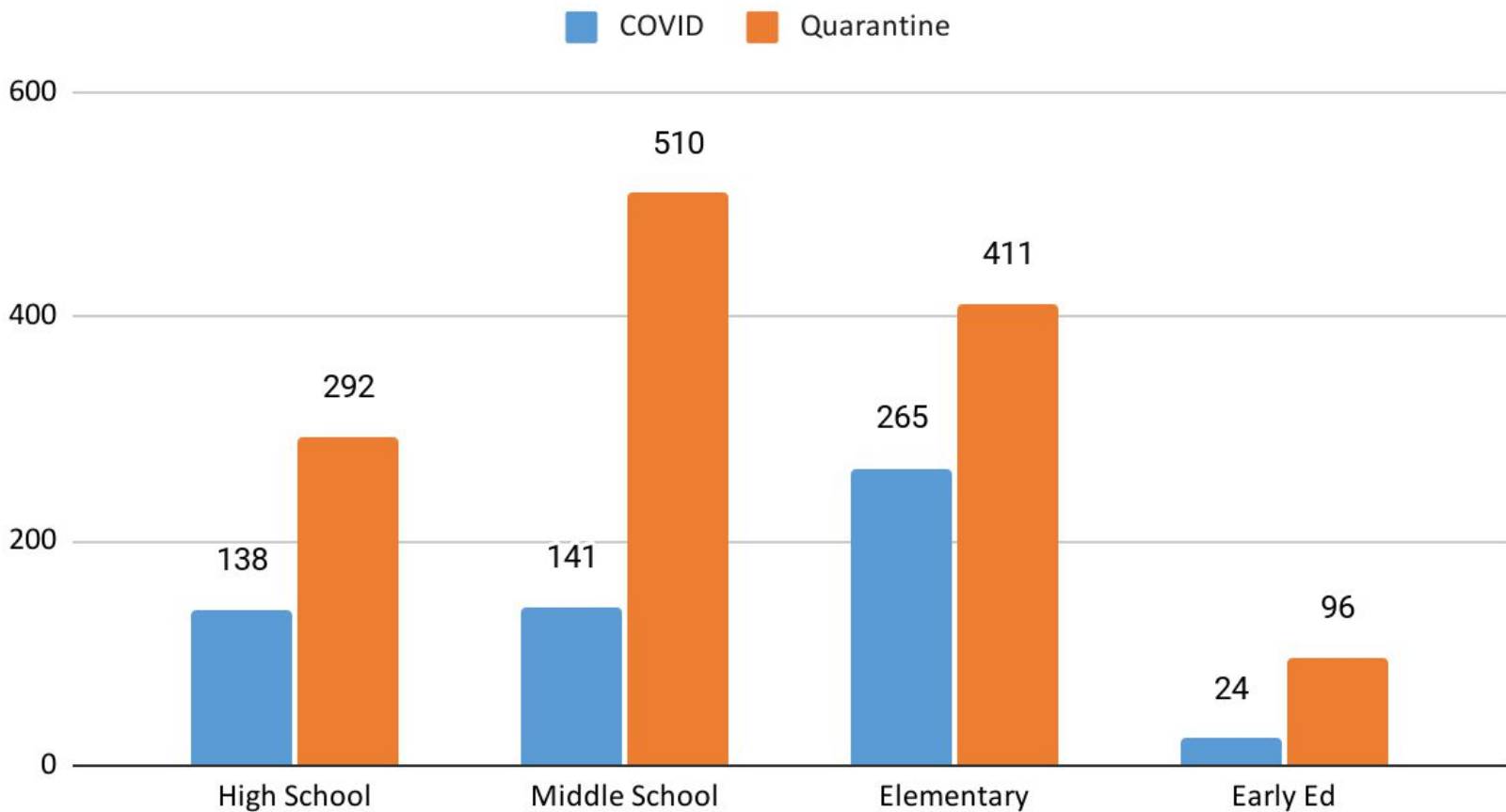
# Student Data by Level

Student Data by Level: Active Cases and Quarantines



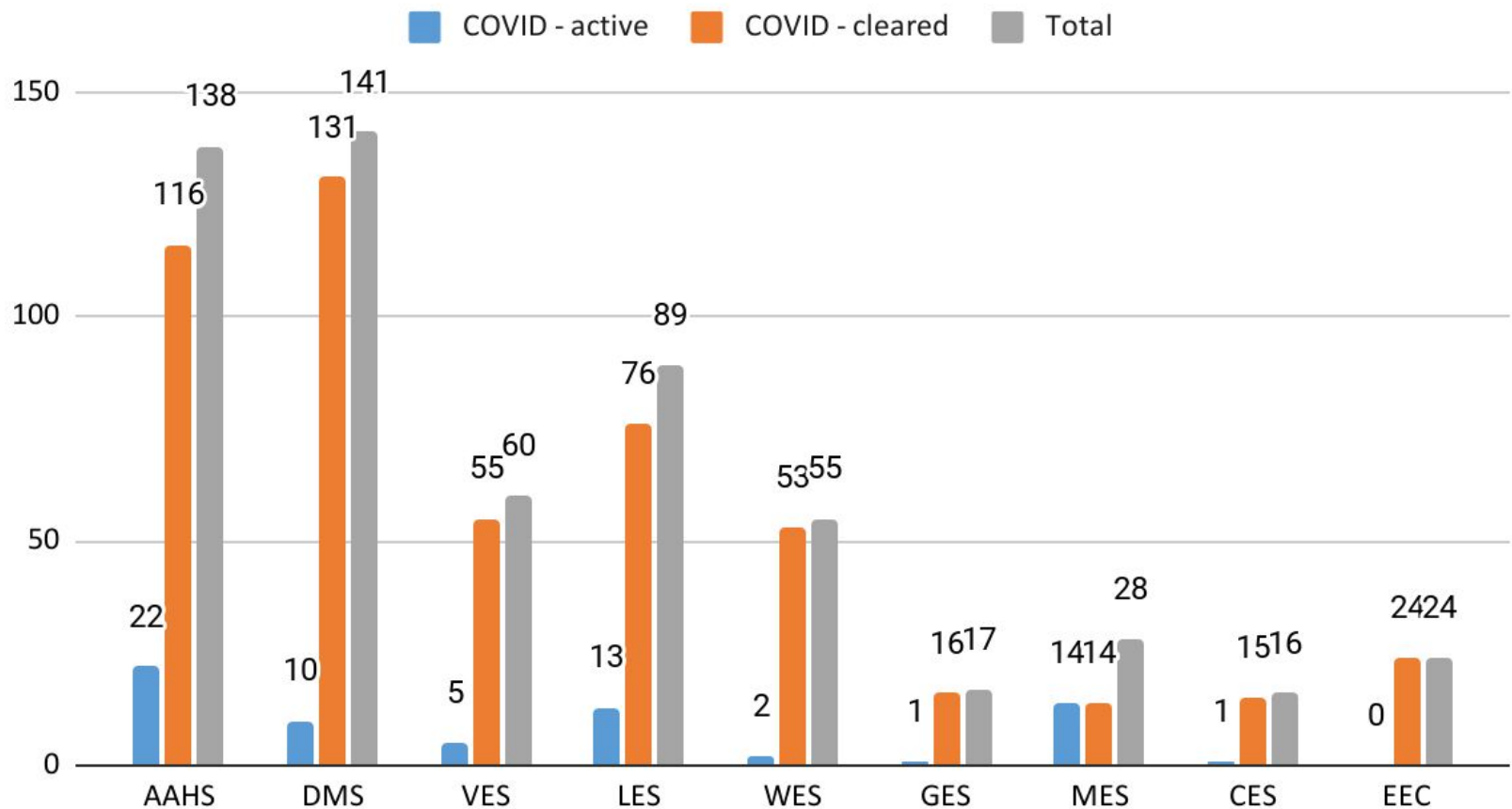
# Student Data by Level

Student Data by Level: Cumulative Numbers - Cases and Quarantines



# Student Data by Level

COVID - active, COVID - cleared and Cumulative Total by Building



# Tier Level by Number of Cases

School	Enrollment	Sep. 9-15	Sep. 16-22	Sep. 23-29	Sep. 30-Oct. 6	Oct. 7-13	Oct. 14-20	Oct. 21-27	Oct. 28-Nov. 3	Nov. 4-10	Nov. 11-17	Nov. 18-23	Nov. 24 - Dec. 1	Dec. 2-8	Dec. 9-15	Dec. 16-21	Dec. 22-Jan. 5	Jan. 6-12	Tier I	Tier II	Tier III	Tier IV
Carlos	108	0	5	3	2	2	1	2	0	0	1	0	0	0	2	2	1		0-1	2	3	4+
Garfield	126	3	3	0	0	0	0	2	0	0	0	0	0	3	3	0	1		0-1	2	3	4+
Lincoln	444	3	8	1	3	5	2	2	6	14	15	13	5	6	1	2	3	13	0-2	3-5	6-12	13+
Miltona	136	1	1	0	2	1	0	0	2	2	0	1	4	2	1	0	0	14	0-1	2	3	4+
Voyager	450	4	8	6	5	2	0	4	3	4	11	11	4	2	3	0	6	5	0-2	3-5	6-12	13+
Woodland	414	0	2	5	0	2	1	2	5	4	10	11	11	2	2	0	2	2	0-2	3-5	6-12	13+
Discovery	979	7	12	10	4	8	0	5	11	13	19	22	11	6	6	3	8	10	0-4	5-10	11-28	29+
AAHS	1,314	3	8	7	6	4	4	10	10	10	11	8	12	11	9	5	11	22	0-6	7-13	14-38	39+